

EHSE — HOEVEN/Seppe

Note: the following sections in this chapter are intentionally left blank:
AD 2.7, AD 2.11, AD 2.14, AD 2.16, AD 2.19, AD 2.20, AD 2.21.

EHSE AD 2.1 AERODROME LOCATION INDICATOR AND NAME

EHSE — HOEVEN/Seppe

EHSE AD 2.2 AERODROME GEOGRAPHICAL AND ADMINISTRATIVE DATA

1	ARP co-ordinates and site at AD	51°33'17"N 004°33'09"E
2	Direction and distance from (city)	7 NM W from Breda.
3	Elevation/reference temperature	30 ft AMSL/21.3°C.
4	Geoid undulation at AD ELEV PSN	Not AVBL.
5	MAG VAR/annual change	0°E (2010)/8'E.
6	AD operator, postal address, telephone, telefax, email, AFS, website	Post: Breda International Airport NV Pastoor van Breugelstraat 93 4744 CG Bosschenhoofd The Netherlands Tel: +31 (0)165 312 470 +31 (0)165 313 937 ¹⁾ Fax: +31 (0)165 313 785 Email: havendienst@breda-airport.eu URL: http://www.breda-airport.eu
7	Types of traffic permitted (IFR/VFR)	VFR
8	Remarks	<ul style="list-style-type: none"> Aerodrome available for national and international civil air traffic with all types of aircraft up to 5700 kg MTOM. No weight restrictions for helicopters. Aircraft with MTOM < 390 kg: PPR. ¹⁾ For aircraft operations and passing of (VFR) flight plan data.

EHSE AD 2.3 OPERATIONAL HOURS

1	AD operator	MON-SAT: 0700-1900 (0600-1800); SUN, HOL: 0800-1900 (0700-1800) but within UDP. Outside OPR HR within UDP: O/R, 24 HR PN.
2	Customs and immigration	AD OPR HR, 1 HR PN ¹⁾ .
3	Health and sanitation	NA
4	AIS briefing office	NA
5	ATS reporting office (ARO)	Competent ATS unit: ARO Schiphol, see EHAM AD 2.3.
6	MET briefing office	NA
7	ATS	NA
8	Fuelling	AD OPR HR.
9	Handling	NA
10	Security	NA
11	De-icing	NA
12	Remarks	¹⁾ PN means permission from and/or in case of customs/immigration etc. notification other than by (VFR) flight plans to aerodrome authority as appropriate and is applicable for every flight.

EHSE AD 2.4 HANDLING SERVICES AND FACILITIES

1	Cargo-handling facilities	NIL
2	Fuel/oil types	100 LL, Jet A1, Euro 98 unleaded/ W100, 15W50, 5W40 (diesel).
3	Fuelling facilities/capacity	Self-service.
4	De-icing facilities	NIL

5	Hangar space for visiting aircraft	AVBL O/R.
6	Repair facilities for visiting aircraft	AVBL for light aircraft.
7	Remarks	NIL

EHSE AD 2.5 PASSENGER FACILITIES

1	Hotels	Accommodation in Roosendaal (5 km) and Bosschenhoofd (1.5 km).
2	Restaurants	At the aerodrome (north/south) and in Bosschenhoofd.
3	Transportation	Taxi, rental car O/R, bicycles limited AVBL.
4	Medical facilities	First aid, hospital in Roosendaal.
5	Bank and post office	Oudenbosch, Rucphen.
6	Tourist office	Roosendaal.
7	Remarks	NIL

EHSE AD 2.6 RESCUE AND FIRE FIGHTING SERVICES

1	AD category for fire fighting	CAT 2, CAT 3 O/R.
2	Rescue equipment	Fire tender.
3	Capability for removal of disabled aircraft	AVBL via Mastenbroek Aeroskill.
4	Remarks	NIL

EHSE AD 2.8 APRONS, TAXIWAYS AND CHECK LOCATIONS/POSITIONS DATA

1	Apron surface and strength	Surface: grass. Strength: ACFT up to 5700 kg MTOM.								
2	Taxiway width, surface and strength	<table border="0"> <thead> <tr> <th>North of RWY</th> <th>South of RWY</th> </tr> </thead> <tbody> <tr> <td>Width: 10.5 m</td> <td>Width: 10.5 m</td> </tr> <tr> <td>Surface: ASPH</td> <td>Surface: CONC/grass tiles</td> </tr> <tr> <td>Strength: 5700 kg MTOM</td> <td>Strength: 5700 kg MTOM</td> </tr> </tbody> </table>	North of RWY	South of RWY	Width: 10.5 m	Width: 10.5 m	Surface: ASPH	Surface: CONC/grass tiles	Strength: 5700 kg MTOM	Strength: 5700 kg MTOM
North of RWY	South of RWY									
Width: 10.5 m	Width: 10.5 m									
Surface: ASPH	Surface: CONC/grass tiles									
Strength: 5700 kg MTOM	Strength: 5700 kg MTOM									
3	Altimeter checkpoint location and elevation	NIL								
4	VOR checkpoints	NIL								
5	INS checkpoints	NIL								
6	Remarks	NIL								

EHSE AD 2.9 SURFACE MOVEMENT GUIDANCE AND CONTROL SYSTEM AND MARKINGS

1	Use of aircraft stand ID signs, TWY guide lines and visual docking/parking guidance system at aircraft stands	NIL								
2	RWY and TWY markings and LGT	<table border="0"> <tr> <td>RWY:</td> <td>THR, centre line, RWY designators.</td> </tr> <tr> <td>Grass strip:</td> <td>white corner tiles, white edge markers.</td> </tr> <tr> <td>North TWY:</td> <td>centre line, HLDG positions.</td> </tr> <tr> <td>South TWY:</td> <td>blue edge markers, HLDG positions.</td> </tr> </table>	RWY:	THR, centre line, RWY designators.	Grass strip:	white corner tiles, white edge markers.	North TWY:	centre line, HLDG positions.	South TWY:	blue edge markers, HLDG positions.
RWY:	THR, centre line, RWY designators.									
Grass strip:	white corner tiles, white edge markers.									
North TWY:	centre line, HLDG positions.									
South TWY:	blue edge markers, HLDG positions.									
3	Stop bars	NIL								
4	Remarks	NIL								

EHSE AD 2.10 AERODROME OBSTACLES

For obstacles at and in the vicinity of the aerodrome see AD 2.EHSE-ADC.

EHSE AD 2.12 RUNWAY PHYSICAL CHARACTERISTICS

Designations RWY NR	True BRG	Dimensions of RWY (m)	Strength (PCN) and sur- face of RWY and SWY	THR co-ordinates RWY end co-ordinates THR GUND	THR elevation and highest elevation of TDZ of precision APCH RWY
1	2	3	4	5	6
07	066°	830 x 23	5700 kg ¹⁾²⁾ ASPH	51°33'13.61"N 004°32'56.33"E*	NA
25	246°	830 x 23	5700 kg ¹⁾²⁾ ASPH	51°33'22.34"N 004°33'28.44"E*	NA

Designations RWY NR	Slope of RWY- SWY	SWY dimensions (m)	CWY dimensions (m)	Strip dimensions (m)	OFZ
1	7	8	9	10	11
07	NA	NA	NA	950 x 80	NA
25	NA	NA	NA	950 x 80	NA

Remarks**12**¹⁾ Bearing strength.²⁾ MAX tyre pressure 0.84 MPa.**EHSE AD 2.13 DECLARED DISTANCES**

RWY Designator	TORA (m)	TODA (m)	ASDA (m)	LDA (m)	Remarks
1	2	3	4	5	6
07	754	814	830	752	DTHR: 78 m.
25	752	812	830	754	DTHR: 76 m.

EHSE AD 2.15 OTHER LIGHTING, SECONDARY POWER SUPPLY

1	ABN/IBN location, characteristics and hours of operation	Information not AVBL.
2	LDI location and LGT Anemometer location and LGT	LDI: 100 m NW from displaced THR RWY 07. Anemometer: 120 m NW from displaced THR RWY 07.
3	TWY edge and centre line lighting	NIL
4	Secondary power supply Switch-over time	NIL
5	Remarks	NIL

EHSE AD 2.17 ATS AIRSPACE

1	Designation and lateral limits	NA
2	Vertical limits	NA
3	Airspace classification	G
4	ATS unit call sign Language(s)	NA
5	Transition altitude	IFR: 3000 ft AMSL; VFR: 3500 ft AMSL.
6	Hours of applicability	NA
7	Remarks	NIL

EHSE AD 2.18 ATS COMMUNICATION FACILITIES

Service designation	Call sign	Channel/ Frequency (MHz)	Hours of operation	Remarks
1	2	3	4	5
Aerodrome information	Seppe Radio	120.655	See EHSE AD 2.3	NIL

EHSE AD 2.22 FLIGHT PROCEDURES

1 VFR FLIGHT PROCEDURES AND REGULATIONS

1. The circuit area may not be overflown below an altitude of 1030 ft AMSL (1000 ft AAL).
2. The minimum approach altitude is 1030 ft AMSL (1000 ft AAL).
3. The circuit altitude is 730 ft AMSL (700 ft AAL).
4. Joining and leaving the circuit area shall take place as depicted on AD 2.EHSE-VAC.
5. The visual traffic circuit must be carried out within the lateral limits of the circuit area as depicted on AD 2.EHSE-VAC.
6. Built-up areas shall be avoided as much as possible.
7. On final landing lights must be switched on.
8. When taking-off in an easterly direction and a white righthand arrow is displayed in the signal area: fly a righthand circuit.
9. Departure RWY 25: after take-off maintain track 240° MAG on take-off leg due to noise abatement.
10. When leaving the traffic circuit heading exit point RWY 25, be aware and avoid parachute dropping zone located at APRX 1 NM west of AD.
11. Pilots are urgently advised to adhere strictly to the prescribed procedures and to keep a sharp lookout for military aircraft approaching Woensdrecht MIL AD. These aircraft cross the circuit area at a minimum altitude of 1500 ft AMSL.

2 RADIO PROCEDURES

1. Arriving traffic contact Seppe Radio 5 MIN before ETA and departing traffic before taxiing.
2. Report entry point joining the circuit, downwind and final. When continuing with touch-and-go landings, report half-way downwind and turning final.
3. Helicopters are requested to use call sign with prefix HELI in the circuit to increase situational awareness of other AD traffic, indicating that short helicopter circuits can be expected.
4. Two-way radio contact with the AD office is mandatory for all aircraft taxiing south of the runway, for crossing the runway and when lining up RWY 07/25.

EHSE AD 2.23 ADDITIONAL INFORMATION

1 CAUTIONS AND ADDITIONAL INFORMATION

1. Parachute jumping may take place as stated in ENR 5.5 and/or as promulgated by NOTAM.
2. Visiting aircraft shall park north of the runway, adjacent to the AD office. The designated parking area is marked by blue flags.
3. Parking and taxiing south of the runway is for visiting aircraft PPR only.
4. The grass strip south and adjacent to the asphalt RWY 07/25 is for exclusive use by aircraft fitted with tail skid.

EHSE AD 2.24 CHARTS RELATED TO AN AERODROME

Type of chart	Page
Aerodrome chart	AD 2.EHSE-ADC
Visual approach chart	AD 2.EHSE-VAC

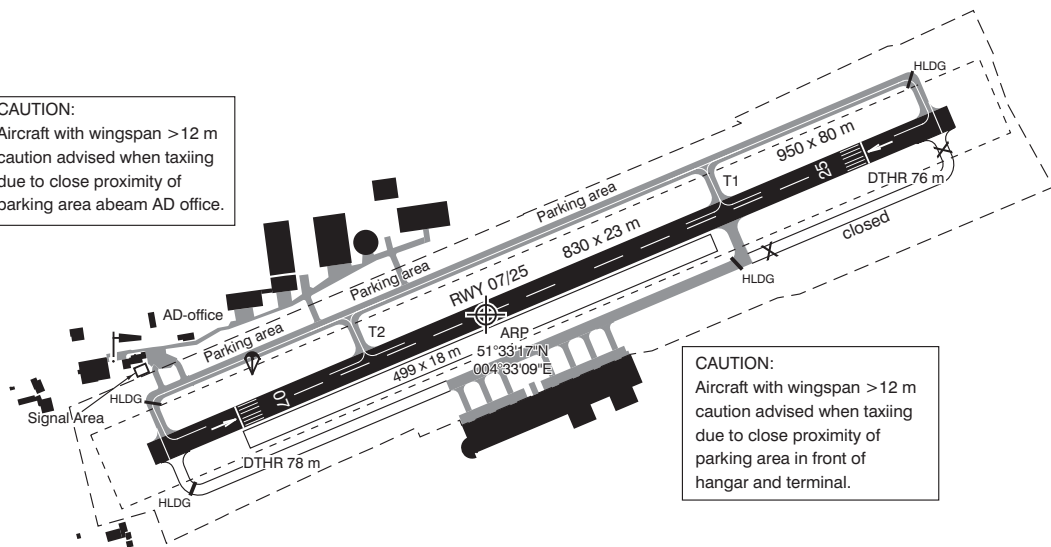
AD info 120.655 Seppe Radio

AD ELEV 30 AMSL

VAR 0° E (2010)

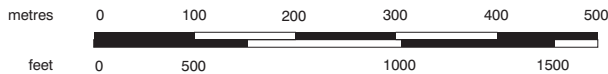
ANNUAL RATE
OF CHANGE 8' E

CAUTION:
Aircraft with wingspan > 12 m
caution advised when taxiing
due to close proximity of
parking area abeam AD office.



CAUTION:
Aircraft with wingspan > 12 m
caution advised when taxiing
due to close proximity of
parking area in front of
hangar and terminal.

SCALE 1: 7500



ELEVATIONS IN FEET AMSL

LEGENDA

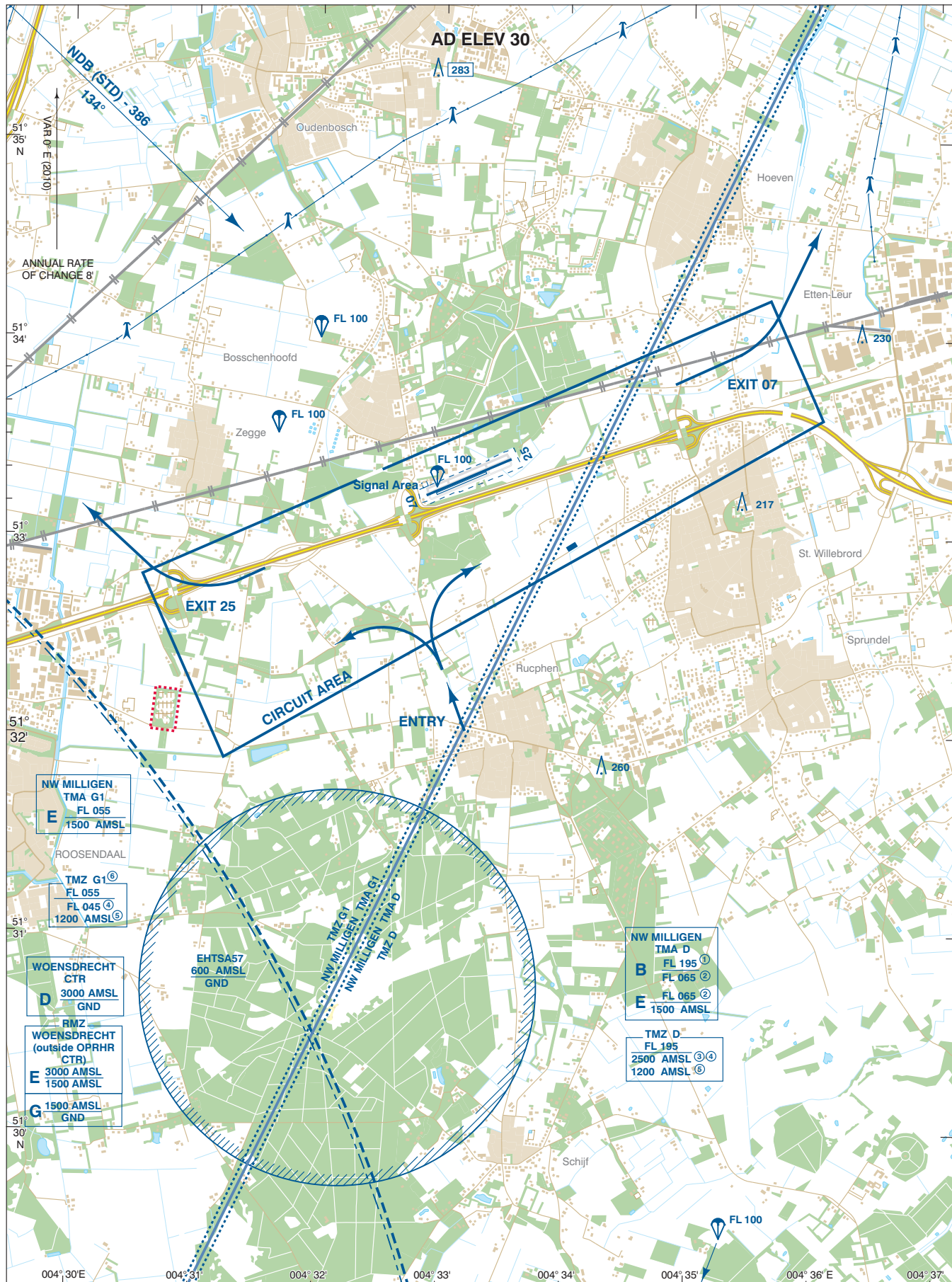
— Taxi holding position marking

PHYSICAL CHARACTERISTICS				
RWY	DIRECTION GEO	MAX MTOM	MAX TYRE PRESS	SURFACE
07	066°	5700 kg	0.84 MPa	ASPH
25	246°	5700 kg	0.84 MPa	ASPH

LIGHTING AIDS:
None.

MARKING AIDS:
RWY : THR, centre line, RWY designators.
Grass strip : white corner tiles, white edge markers.
North TWY : centre line, HLDG positions.
South TWY : blue edge markers, HLDG positions.

NOTE:
1. Visiting ACFT shall use the parking area north of RWY, marked by blue post (height 225 mm).
The entrance of this parking area is marked by blue flags.
2. Grass cutting may take place at irregular times.



For description VFR - procedures see EHSE AD 2.22.

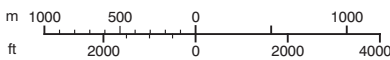
NOTES:

- ① Upper limit below Amsterdam CTA South 2: FL 095.
- ② During weekends FRI 1600-SUN 2300 (FRI 1500 - SUN 2200 summertime) and HOL classified E up to and including FL 095.

TMZ:

- CTR are excluded from TMZs.
- ③ MON-FRI before 0800 (0700) and after 1600 (1500), SAT, SUN, and HOL.
- ④ MON-FRI 0800-1600 (0700-1500), EXC HOL: lower limit for non-motorised hanggliders and paragliders.
- ⑤ MON-FRI 0800-1600 (0700-1500), EXC HOL: lower limit 1200 ft AMSL.
- ⑥ Only active MON-FRI 0800-1600 (0700-1500), EXC HOL.

SCALE 1: 50 000



AD Info 120.655 Seppes Radio
FIC (MIL) 132.350 Dutch MIL Info

BEARINGS ARE MAGNETIC
DISTANCES IN NM
ALTITUDES AND ELEVATIONS
IN FEET AMSL

HIGHEST KNOWN ELEVATION
ON THIS CHART: **283**

- Area to be avoided
- Visual circuit marker (red coloured)

